

ANNUAL PAROCHIAL CHURCH MEETING

St Thomas
Brampton



CONTENTS

Agenda

Minutes of Last APCM

Reports

Warden's

Golden Folks

Thom's Blokes

Knit and Natter

Kids and Youth

Centre

Alpha

Annual Report and Accounts



ANNUAL PAROCHIAL CHURCH MEETING

Agenda

Sunday 28 April 2024 1.30pm (approx.)
St Thomas' Church

ANNUAL MEETING OF PARISHIONERS

1. *Opening worship, readings & prayer*
2. *Minutes of last year's Annual Meeting of Parishioners.*
3. *Elections of Churchwardens for the ecclesiastical parish.*
Note: The Representation Rules state that nominations for this election must have been received by the Priest in Charge before the start of the meeting

ANNUAL PAROCHIAL CHURCH MEETING

1. Apologies for absence received.
(*Not assumed apologies for those noticed to be absent*)
2. Minutes of last year's Annual Parochial Church Meeting.
3. Amendments and Adoption of those Minutes as an accurate record.
4. Reports
(written reports are in the Annual report or the Year in the life of St Tomas')
 - a. The Vicars Report
 - b. Electoral Roll report on numbers, additions, deletions.
 - c. Annual report (written report)
 - d. Church Wardens Report (written report)
 - e. Deanery Synod (written report)
 - f. Financial report (written)
 - i. Questions in the accounts

ii. Appointment of auditor for the coming year.

5. Time for Questions

(if you would like to ask a question about any aspect of Church life then please submit these to the PCC Secretary sue@fourwheelers.co.uk by Thursday 25th April 2024)

6. Matters Arising

(Those items not covered by reports)

7. Elections

- a. P.C.C. representatives (3x 3yr vacancies)
- b. Deanery Synod Representatives (x3 vacancies)

8. Any other business or (please submit to the PCC Secretary sue@fourwheelers.co.uk by Thursday 25th April 2024)



ANNUAL PAROCIAL CHURCH MEETING

Wednesday 17th May 7.30pm

St Thomas' Church

PRESENT

Revd Gary Weston – Chaired the meeting.

Mike Alton, Joel and Becky Botham, Mike and Jacki Bartrop, Julie Barton, Paul Benson, Sharon Burrows, Martin Cox, Peter Cooney, Val and Robin Dawson, Suzy France, Millie Gurthrie, Carla Jackson, Pauline Kelshaw, Tim and Lindsay Leteve, Christine McPhearson, Helen Murray, David Oldale, Alex Quinton, Ingrid and Pete Raby, Beth Robson-Smith, Nathan Rourke, Karen Riley, Stuart Robinson, Pauline Simmons, Jenny Smedley, Matthew Sparks, Julie Sparks, Elizabeth Travis, Sue Ward, Paul and Diana Willis, Marie and Tony Witham, Angela Wright, Tim and Sue Wheeler, Claire Wood, Ben Widdowson, Ann Wakeman, Clare Weston.

APOLOGIES

Nicky Aitken, Pam Brimlow, Ruth and Phil Bird, Diane and Mick Boothby, Janet Bradbury, Janet and Dave Brown, Sian Benson, Isobel Crawford, Ian Duncan, Mark and Ann Hoare, Fran and Graham Johnson, Mark Jackson, Phil Riley, Grace Steele, Kathryn Shemwell, Ian Simmons, John Paul Smedley, Rosie Welch, Denis Wilmot, Jon Wood.

ANNUAL MEETING OF PARISHIONERS

1. *Opening worship, readings & prayer*

Gary began the meeting by reminding us that this time is about God and how we work with him and that this will frame the whole evening. There was a time of sung worship and Gary reflected on Ephesians 4: 1-7.

2. *Minutes of last year's Annual Meeting of Parishioners.*

The minutes of last year's meeting were approved by all those who were present (11 abstentions due to absence).

3. *Elections of Churchwardens for the ecclesiastical parish.*

Millie Guthrie was nominated by Karen Riley and seconded by Robin Dawson.

Tony Witham was nominated by Karen Riley and seconded by Millie Guthrie.

There were no other nominations, so they were duly elected.

ANNUAL PAROCHIAL CHURCH MEETING

1. Apologies for absence received.

See above.

2. Minutes of last year's Annual Parochial Church Meeting.

All present approved the minutes of the last meeting (15 were not present and therefore abstained).

3. Amendments and Adoption of those Minutes as an accurate record.

No amendments were requested, and the minutes were accepted as an accurate record of the last APCM.

4. Matters Arising from last year's APCM.

(Those items not covered by reports)

Item 4 – Mindful of the diocesan requests for churches to be “cutting their cloth”, John Small asked last year, what cost cutting measures the Diocese were doing. Karen Riley raised this at Deanery and Jenny Smedley was then asked to raise it at diocesan synod and we are awaiting a response.

5. Reports

(written reports are in the Annual report or the Year in the life of St Tomas')

- a. **The Vicars Report** – Revd Gary Weston began by noting that this was his first APCM since his arrival just a year ago and he wanted to **start with thanks**. On behalf of Clare and myself to all of you thank you for your welcome and support for us, extended to the Wardens and the Staff Team. Thanks to the church family, no church runs on a few people, we have people involved in so many things from sung worship and readings, to the raking of stones – all roles are important. Without you, this place wouldn't be this place.

Gary went on to say that he likes to have a **“celebration moment”** at the APCM. Gary explained that this year he wanted to give a box of “Celebration” chocs, to a person who he observed gently chatting to a young child at holiday club who gently invested time in a child who had been distracted, helping them to reengage in the session - and this was *Jackie Bartrop*.

Gary then moved on to reflect on our **identity and purpose** (Gary was due to do this earlier in the year but it was postponed due to illness). He identified that the parish profile, a document that describes a church, and one, he said, of which you usually needed to read between the lines. When he arrived, he felt he discovered a whole lot more information that was in the gaps of our profile. Through conversations he discerned that the profile was a picture of where the parish was 8-10 years ago. Not a current reality. The secondment of the previous incumbent, Rev Matt Barnes, followed by the pandemic had had a big impact on the church. It was important to recognise that the parish profile and the collective story we were carrying was in the past, stressing that it is important to know the current reality so we can more accurately measure progress. This is illustrated in Sunday attendance – Pre covid average attendance was 164, (U16-29) and is now 103 (U16-16). We could view that as an awful loss, OR, when we include the attendance immediately after covid which was 58 (U16-13), we discover that we are actually doing better.

We need to grasp where we are so that when we make gains we see them as success, (although there will inevitably be failures along the way). Gary reflected that it is fair to say that when he arrived, it was in a different place from the parish profile he received, and the church may have already lost its identity and way. This is not a criticism; the PCC made a commitment to St Thomas’ as a lively and growing evangelical church and this is what we want to work towards being again. Our pattern of worship should be lively, and joy filled, which include both the organ and band. We are not talking about the phasing out of traditional worship. Two out of three services lean towards contemporary worship. We need to be a church that focuses on growing younger. The number of young people attending Anglican churches is terrible with many having none. In that reality, we are not doing too bad. Of note we don’t count the youth, Café, tots time and kids club. We have a need to

focus on growing younger, or we die out. We need to be accessible to young people and children and families, part of that is having a younger age group represented at the front in Church, If you don't see yourself represented at the front you don't feel as included. We describe ourselves as Evangelical and this means that we hold the Bible as true and want to share it with others.

How do we do this? We need a **Strong focus on discipleship** (A lot of people left since covid, as they didn't have a strong sense of discipleship). We need to be saying that discipleship is important teaching and equipping for self-directed discipleship. We need a **Strong focus on mission** and a **deeper sense of community**. We need to be attractive and reaching out. Gary said he was not keen on vision statements – we can come up with clever plans and then God says something else! – The world we are living in is so different from anything we have experienced so we can't have a plan how to manage it because we have not been here before.

Gary went on to say that another thing he has discovered is that we are, as a church, no different from other churches. We have suffered, some have joined, some have left, some are happy, and some are not. Criticism happens, **constructive criticism is helpful** and welcome, but it must come from the right place. A lot of preachers found the experience of covid tough and exhausting. Gary affirmed that he still welcomes criticism and explained what he meant by "coming from the right place, giving the example of a conversation that might start *"I want you to know I am with you and for our church and out of this commitment I am going to tell youthis."* It can be helpful, but not within a closed group or among each other. He clarified that, if he doesn't know about a problem, he can't put it right. We will, at the very least, have understood each other's point of view. We **need moments of encouragement**. People need to say it to leaders and to each other. We are full of potential; we have lots of people with gifts to serve. If we all play our part, we will become a people that God wants us to be, so that others get to know God and are saved for all eternity.

In order to help us to become the people God wants us to be, Gary was pleased to announce that we have **a curate called Josie joining us** in a couple of months' time. She comes in a position to train, and we need to treat her with love and grace. She will be studying for an

MA whilst she is with us. Her husband Jack is also joining us. Please pray for them, for housing etc. We need to get it right for them.

b. **Electoral Roll report** on numbers, additions, deletions.

We tried to get as accurate a picture as possible by proactively reviewing the roll this year. In 2022 the roll was 226. Since then, 5 have died, 67 have left, moved away or live outside the parish and have not attended recently. The **electoral roll is now 162**.

c. **STB Annual report** (written report) STB report from Alex Quinton –

This year the centre bought in a profit £3,000 but there has been a good amount of investment with new TV's, a coffee machine, and they have supported events such as the Whisky evening and the Cheese and Wine eve to come. He encouraged people to support the centre by buying coffee on a Sunday. The challenges at the moment are getting on to online banking and challenges of Saturday opening. There is a plan to advertise more widely and hope to increase attendance.

Gary added that there has been a significant shift from "Church and centre" to being "all church".

There were no questions.

d. **Church Wardens Report** (written report) from Tony Whitham – part

of his role as a warden is looking after Fabric, which, he said, you can see all around you. It is all in good shape considering size and age of building. He has recently been concentrating on the church inventory which is now pretty much up to date. There has been a lot of "sorting out". On July 26 we have the Archdeacon's visitation where they make an examination of our records and ensure all is in order. We are still looking for someone to take over responsibility for the overall maintenance. At the moment we have a lot of very willing people looking after bits, but we need someone with a full overview. The PCC has recognised the need to reserve some finance for maintenance.

There were no questions.

Gary added that we are due a quinquennial report.

e. **Deanery Synod** (written report) – no questions

- f. **Financial report** (written) From Lindsay Leteve, outgoing treasurer. As those of you who have studied the meeting information will know, there are two elements to the financial report contained in the APCM document.

There is a brief financial report which covers the finances of St Thomas' Brampton alone. This shows that the unrestricted income received by the PCC was greater than the expenditure from unrestricted funds. I have highlighted a few key points for your information.

The 2022 Annual Report and Accounts, which come immediately after the brief St Thomas' financial report, cover the affairs of the parish which – until 1 October 2022 – included St Peter's Holymoorside. The statement of financial activities on page 14 of the Annual Report and Accounts shows the impact of the pastoral reorganisation, with the removal of St Peter's net assets of around £19,000 and the transfer of the value of the House for Duty of £248,000 to St John's Walton. This leaves the net assets of St Thomas' Brampton alone at 31 December 2022 at just over £157,000. These net assets are split between general unrestricted funds of almost £65,000; designated funds – where the PCC has set aside funds for a specific purpose, in this case for Mission – of almost £22,000, and restricted funds – where the use of the funds is determined by the wishes of the people donating the money – of over £70,000.

It is through the Annual Report and Accounts that the PCC presents its aims, values, and activities to people outside the church family. Its contents and layout must meet the requirements of the Charity Commission, Church Accounting Regulations, and financial reporting standards. This document will be available for public review when it is filed on the Charity Commission website.

With those key financial points highlighted, I present the independently examined Annual Report and Financial Statements of the PCC for the year ended 31st December 2022. If anyone has any questions that they haven't felt able to raise prior to this meeting – or they want to know more about the finances of the individual churches – please feel free to contact me.

Pre meeting question submitted by Rosie Welch, regarding the reduction in our parish share. *"I gather it was decided not to give the*

usual full parish share / common fund contribution this year. Forgive me but I can't remember if there was a specific reason for this.

Whilst everywhere and everyone is under financial pressure, and we may need the funds for specific projects, we are still relatively well-off. Many churches and fellowships are really struggling.

We are called to give and share and use what we have in God's service. Will this decision be reviewed in due course?

Gary explained that he initiated the conversation with the diocese. There has been no recognition from diocese that numbers have dropped because of the pandemic and therefore giving has dropped. We also had 3½ clergy full-time equivalents but are now down to one and it didn't feel the Diocesan ask reflected our changing situation. It is not about "not being generous" or not sharing, but recognising our position and change in circumstance, and we dropped our contribution down by £30,000. When the PCC considered the 2023 budget, we were also facing a potential £60,000 deficit, due to the increases in the cost of living. We therefore decided that we should continue with paying a reduced Parish Contribution for 2023 as this would reduce the potential deficit to £30,000 which we knew we could overcome this year thanks to our year-end balance meaning we would not end the year in debt. As it is the figures are looking better than we thought. We are now designating that £30,000 for maintenance (as mentioned by Tony above).

Gary agrees with Rosie's point regarding suffering but feels our response reflects our position and this will be reviewed when we look at the 2024 budget. The common fund is currently being looked centrally and they will take in to account our new Electoral Roll numbers. We also need to take into account that fact we will be joined by a second stipendiary post and the common fund contribution should reflect this.

i. **Proposal of the formal adoption of the 2022 Accounts.**

Lindsay proposed that the meeting accept the 2022 Accounts Report, Mille seconded, and **all were in favour.**

ii. **Appointment of Independent Examiner** for the coming year – **Howard Freeman from Shorts** were proposed by Lindsay, seconded by Sue Wheeler and **all were in favour.**

Lindsay Leteve was retiring from the roll of treasurer at this meeting and was presented with a gift, saying she had served

faithfully and diligently, steering us through the challenges of an interregnum and covid.

She will be handing over the Ben Widdowson and Paul Willis. A welcome and thanks were given to them in their new rolls.

6. Elections

- a. P.C.C. representatives (4x 3yr vacancies, 1 x2yr vacancy and 1 x1yr vacancy)

Gary explained that Stuart Robinson had been serving on the Deanery Synod but will not be standing again, as he is taking on other diocesan roles responsibilities, and gave thanks to him and to Julie Sparks who has stood down as a PCC member. The PCC is quite large so readers will need to stand for PCC now rather than have ex-officio status. Gary gave thanks to Tim Wheeler (who is a Reader and who has chosen not to stand for election) for his contribution to PCC over the years and for his role with 6pm service. Gary introduced the PCC vacancies (see above). There were 6 nominations for the 6 vacancies, so the following were elected, unopposed.

Paul Benson 3yr vacancy – proposed by Beth Robson, seconded by Tim Sparks

Martin Cox 1yr vacancy – proposed by Sue Ward and seconded by Lindsay Leteve

Liz Travis 2yr vacancy – proposed by Robin Dawson and seconded by Martin Cox

Sue Ward 3yr vacancy – proposed by Pauline Kershaw and seconded by Julie Sparks

Ben Widdowson (Treasurer) 3yr vacancy – proposed by Stuart Robinson and seconded by Mark Jackson

Claire Wood 3yr vacancy – proposed by Rosie Welch and seconded by Sue Wheeler

- b. Deanery Synod Representatives (4 vacancies)

Only one nomination received so they were duly elected.

Karen Riley proposed by Millie Guthrie and seconded by Robin Dawson.

7. Postal Voting

Gary explained that not everyone who is on our Church Electoral Roll is able to attend the APCM. This may include those who are house bound or those who have small children and only one parent is able to make the meeting.

If this is the case, they are currently excluded from voting in elections at the APCM. The Church Representation Rules do allow for Postal Voting, but the APCM has to vote in favour of this.

A vote for Postal Voting only passes if two thirds of those present at the APCM in 2023 vote in favour of it and it will come into force at the APCM in 2024.

The practical implications would be that:

- Anyone wishing to use a Postal Vote must apply prior to the APCM.
- If applications are received then voting papers will be used for all APCM election, both for those present in the meeting and those who have applied for a Postal Vote.
- Voting Papers will only be issued to those who have registered for a Postal Vote and must be returned within 14 days of the close of the APCM.
- If we vote in favour using Postal Voting, then there is a possibility that the result of any election at the APCM will not be known for 14 days after the date of the APCM.

Tim Wheeler asked if voting could be done by email. Gary replied that it couldn't. It could be hand posted and hand returned so it won't be too expensive.

Martin Cox asked if this decision only applied to Election voting at the APCM. Gary confirmed that it was.

Gary proposed that we vote to accept postal voting.

The proposal to accept postal voting was passed by a majority with 4 against and 2 abstentions.

8. Any other business – there was no other business raised.

Gary concluded the meeting by saying that we have done a lot of "business" but that it was business that God has called us to. The evening finished in a further time of worship.

WARDEN'S REPORT

2023 has seen significant developments at St Thomas. We have a new audio visual system. We have Josie our curate and her husband Jack who joined us towards the end of last year. Years of clutter has been sorted through, and recently God has provided us with a new Maintenance Coordinator in Pete Raby.

As church attendance continues to fall nationally, the PCC and staff meetings are focused on spreading the good news of the gospel in our community. This is the Great Commission given to us by Jesus - to 'go and make disciples of all'. How do we do that?

Our mission to children and families is growing thanks to Joel and his team. But Joel needs more people willing to serve alongside him. Please do talk to him to see what you could offer.

How else can we grow? We need to be both Attractional and Missional.

Attractional means creating an appealing environment for people to gather in, with vibrant worship, dynamic programs, and engaging events. What do we invite people to? If we run more events who organises and serves during the events? What events work best?

Missional means going out beyond the church walls and being active in our local community. How can we do this? Organise events in places other than church? Show Christian love by service? How best to evangelise to those around us?

Please do pray about these issues and let Tony or Millie have your ideas.

Most churches are struggling with the increasing costs of maintaining church buildings. We are not immune to these problems. Parts of our church

"We all have gifts that can be used at church."

are nearly 200 years old, and even the newer sections are in need of repair. In order to create "an appealing environment" we need to address leaking roofs, crumbling mortar, poor heating, inadequate lighting, the need for improving access and better provision for the full range of disabilities.

The PCC is committed to carrying out a detailed study of what is required to make all of our facilities fit for purpose in the 21st century.

Service is a wonderful thing to do - it encourages deeper connections to our fellow Christians and non-Christians, gives us a purpose greater than ourselves, and helps the church to function. Millie and Tony say a massive thank you to every person who serves.

We all have gifts that can be used at church. Practical, emotional, financial, organisational, smiling and welcoming, pouring drinks and chatting, cleaning the church, litter picking, helping at one of our groups. We cannot assume that the Clergy and staff will do everything. To take our church forward into the future and outward into the community we will need everyone to be fully on board.



GOLDEN FOLKS

Our second year began in April 2023. We have two meetings a month – the first Tuesday of the month where we have a speaker, a film, an activity or games or quizzes. On the third Thursday of the month we have a two course hot meal from the church coffee shop followed by a quiz, game or DVD.

Our speakers have included:- a talk by a disabled speaker on how his Dog for Good helps him in his daily life, a chauffeur to a royal house telling us of his 25 year career, and a speaker from the Derbyshire Mountain Rescue Team. We have also done crafts in the Summer and for Christmas, watched a feature film, had a Summer buffet and a Christmas party. We also did a joint lunch with Thom's blokes followed by a talk on preparing a will and LPA's.

This year we have begun a new series of talks called "Changing Times" featuring members of our group talking about their careers and then hearing from a younger person about that same job now.

We have between 15 and 40 members attending, with more coming regularly on a Tuesday. Our membership includes members of St Thomas Church and also members of the wider community. Since September we have had 10 new members both from our Church and from the community. We have seen God at work with our members all welcoming new comers and also with the regular church goers who help out at meetings, serving teas and coffees on Tuesdays and lunches on Thursdays. These helpers also sit with our members and chat with them during the meetings and are an essential part of the group.

We did a 4 day "Holiday at Home" in late August with activities, a speaker, games and a snack each day. This was open to all members and friends and family. It went very well but we thought it was at the wrong time being the weekend of the August Bank Holiday. It was also too much work for 2 people to compile. We are planning a 2 day "Holiday at Home" this year but much earlier on July 17th & 18th. We welcome Nichola Edmunds to the planning team and thank her for all of her hard work.

"Since September we have had 10 new members"



THOM'S BLOKES

We are now in our eleventh year and our membership has continued to slowly increase, now standing at 66. Sadly during the year one member died, two resigned due to ill health and one moved away. Not all members are able to attend due to poor health or responsibilities as carers, but they appreciate being kept in touch with what we are doing. 47 people have attended at least one meeting in 2023. All of our meetings are relaxed, jovial affairs, with (to quote Robin Dawson) "plenty of high-quality banter!"

Our regular annual fixtures of Bowling and Pool in January, and Christmas Dinner in December were well attended and as popular as ever. During the year we enjoyed speakers talking on a range of topics including historical talks about the Strutt family in Belper and the world's largest WWI munitions factory, more modern-day topics such as fracking and climate warming, and personal stories about the work of the Blood Bikes, and the challenges of working on South Georgia.



"All of our meetings are relaxed, jovial affairs..."

We undertook three trips with mixed results! The Brampton Brewery visit was popular (no surprise!), as was the trip to the Great British Car Journey. There was much fond reminiscence about cars that members had driven or owned that are now considered to be museum exhibits! Whether it would be correct to say our visit to the site of the former Magpie Mine was popular is debatable, 'weather' being the issue! 16 brave members battled against wind and driving rain on this exposed site near Sheldon. Such was their endurance that Robin Dawson remarked "we deserve a medal for this". A medal was duly crafted and awarded to Alan Sheldon for having worn the least appropriate clothing for the trip! Our Committee are hard at work crafting another full programme for 2025. One consideration has been the desire to become slightly more mission focussed. Following discussions with Gary Weston the Committee has decided firstly to advertise the current church activities at the start of each meeting, and secondly to include talks from people with an interesting story to tell, but whose motivation is clearly based on their Christian faith. We hope our founder David Sanderson would approve.

KNIT AND NATTER

Through 2023 the group continued to grow with 20 new members. Some people simply come to see what is going on in the hall, some are referred by social prescribers, some come with friends and some are members from years ago who have returned – all are very welcome. We now have 64 members who are regular attenders and 12 previous members with whom we are still in contact.

Many of the members have numerous demands made on them, and the group can be a sanctuary of peace and fellowship. Many live alone, enjoy socialising in the happy relaxed atmosphere and enjoy delicious goodies from the Centre Kitchen. We often pray for and with people, we do not push anything but the Lord often opens opportunities to share what he has done for us. The WhatsApp group is a point of contact at any time and the weekly Tuesday Thoughts are shared via this – which includes a Bible verse and other uplifting quotes.

We have certainly seen God moving in answered prayers about individual situations and in the various groups that we support and who are blessed with beautifully made items; Baby Basics; Operation Christmas Child; The Food Hub (many children's hoodies were knitted and handed out to families in need); Hope House; Ashgate Hospice (we are knitting hearts that patients and families can share) and the Residential care homes, Chatsworth Lodge and Brookholme, whose residents received knitted Christmas stockings or sacks filled with a small bar of chocolate.

We have also raised funds, either by raffles, bring and buys, or from our weekly fees which have benefitted the work of – Bluebell Wood Children's Hospice, Hope House, The Chatsworth Road Flood Relief Fund, Operation Christmas Child, Church on the Bus, Guide Dogs for the Blind and Monkwood Food Hub.

We thank God for everyone's skills and the love they show to their friends in the group or people they will never meet.



"We have certainly seen God moving in answered prayers..."

KIDS + YOUTH

The past year has seen some great strides forward in our Kids, Youth and Families ministry and we've been really blessed to see God at work through this mission field. Tots Time continues to grow numerically but more importantly in depth of relationship between team and those attending. Sadly this year saw one of the children attending Tots Time pass away, however due to the connections made at TT in the years prior to this we were able to support the family and the wide community during this difficult season.

Our Kids Club which takes place on Thursday evenings was 1 year old in September and God has continued to bless the connections being made there. We've continued to see a wider scope of families engaging with the church.

We've continued to run a programme of annual events targeting families. The biggest of these being Holiday Club. Last year Across the 4 days leading up to Good Friday we interacted with 58 children. This year it took place on the 4 days following Easter Mon and saw an increase of 15 children with a total of 73 children attending across the week. . It was such a joy to worship, pray and share the Good News with so many children, the majority of which were not from church backgrounds. The team did an amazing job of engaging the kids in all aspects of Holiday Club, worship bible study, games, workshops.



"We've been really blessed to see God at work through this mission field."

What was our warm spaces initiative last year has continued to meet on a Monday morning and is growing, gaining more popularity. This group focuses more on making connections with parents. We're looking at ways that we could use this space to draw parents into discipleship. Our Sunday Youth group closed down this year for a number of reasons we are now looking at new and different ways to engage our young people in discipleship and deepening relationship with God and each other.



CENTRE

This year we have been truly blessed to see God at work in the centre as we continue to grow the extension of the church.

Over the last year we have been able to continue the ongoing work of growing the church community. The centre has provided 1/3 of its space to church use in groups, activities and events. This has included events that support the church in growing in community but also in activities such as Parenting for faith, children's work, Grief courses and more. It has been a pleasure to be able to support and supply them all.

The other 2/3 has been available to community members projects and commercial spaces. We have been well used for NHS services and built great relationships with them and other local charities over the last year. It has been an invaluable source to then have conversations about the centre, other uses and invite them to use other services like the panto.

The centre has hosted a range of events such as cheese and wine night, quiz events and markets that has opened up the opportunities for us to engage with the community.

As a centre we have continued to look at how we can be good stewards of Chesterfield and our site. We continue to support local suppliers and are always looking at how we can work with faith based organizations and makers.

God has been present in our staff team as we meet to pray weekly and share our faith journeys with each other. We as team members are always looking for ways to show kindness to all of our users.

From that we have grown a supportive group of regulars to both meeting spaces and the coffee bar.

We have been truly blessed by the relationships that we have built with Ashgate Croft School. They have been volunteering in our Coffee Bar alongside faithful church volunteers. This gave us great links and opportunities to engage with the school.

We as a team would like to take this opportunity to say thank you to all of the volunteers that walk with us daily to be a place that shows God's work in space.



"we have been truly blessed to see God at work in the centre."

ALPHA

This year we ran an Alpha course, which continued to attract members of our church and local residents. It is a space that allows us to welcome all no matter their background and let them come with any questions they may have.

Meeting with them over a number of weeks also allows us to get to know people more intimately, knowing them on a personal level as we allow them space to share their experiences that have got them to where they are and build community with the other attendees.

God was at work through the course, making space for difficult questions, the group bonding well and everyone feeling comfortable in the space. Alpha is always a great time for those that lead, renewing faith and seeing things in new ways. It brings a great opportunity to serve in the church.

We would like to take this opportunity to thank all of those that baked for this course and supported the ongoing work that Alpha does in our community. Cake always provides a great talking point!

We had a great time with Alpha again and look forward to many more Alphas to come in the future.

"God was at work through the course, making space for difficult questions..."



FINANCE

**2023 Annual Report and Accounts
for the Parochial Church Council of
St Thomas Church, Brampton**



Registered Charity Number: 1138026

Introduction

In this document, the Parochial Church Council (PCC) presents its annual report with the financial statements for the year ended 31 December 2023. The PCC is an unincorporated charity registered with the Charity Commission (charity number 1138026).

Aim and Purposes

St Thomas Parochial Church Council (PCC) has the responsibility of cooperating with the incumbent, in promoting in the ecclesiastical parish, the whole mission of the Church, pastoral, evangelistic, social and ecumenical. The PCC is also specifically responsible for the maintenance of the Church building and the St Thomas' Church Centre in conjunction with STB (Chesterfield) Ltd (STB) as laid out in the management agreement between the PCC and STB.

Objectives and Activities

The PCC is committed to enabling as many people as possible to worship at our church and to become part of our church community. The PCC, alongside the incumbent, maintains an overview of worship in the parish. Our services and worship reflect who we are as the gathered people of God, as we look to put faith into practice.

When planning our activities for the year, we have considered the Charity Commission's guidance on public benefit and, specifically, the supplementary guidance on charities for the advancement of religion. In particular, we try to enable ordinary people to live out their faith as part of our parish community through:

- Worship and prayer; learning about the Gospel; and developing their knowledge and trust in Jesus.
- Provision of pastoral care for people living in the parish.
- Missionary and outreach work.

To enable this work it is important that we maintain the fabric of St Thomas' Church and the Church Centre.

Achievements and Performance

Worship and prayer

We continue to offer a range of services on Sunday's and over the course of the year that our community find both beneficial and spiritually fulfilling. Our current regular pattern is of three services most Sunday's which are a traditional liturgically based service at 9:15am and a more contemporary and less formal service at 10:45am which includes specific groups for families and a smaller informal gathering at 6pm which has had a strong prayer focus during the year.

In addition to these we hold a number of one-off services at Easter, for Remembrance Sunday and at Christmas, which are attended in greater numbers by those in our community.

Over the last year we have seen an increase in numbers of those who are part of St Thomas' with 45 new people joining over the year, however the annual October count indicated that the regularity with which people join us on a Sunday has dropped slightly. We saw a significant increase of those that attended service at Christmas in 2023 in part due to the addition of the Coffee, Cake and Carols service which had a more contemporary feel, as well as the fact that we hosted the Derbyshire Police Carol Service this year.

As well as our regular services, we enable our community to celebrate and thank God at the milestones of the journey through life. Through baptisms and dedications we thank God for the gift of life, in marriage public vows are exchanged with God's blessing and through funeral services friends and family express their grief and give thanks for the life which is now complete in this world and to commend the person into God's keeping.

We have celebrated 3 baptisms, 4 dedications, 1 wedding and held 15 funerals in the year.

Electoral Roll

The Parish Electoral Roll, stands at 162, this will be updated and reviewed before our APCM in April 2024.

Church groups & activities

Throughout the year we have run several regular activities. A number of these are focused on families and those under 18 and include Tots' Time, Kids' Club which meet weekly during term time. During the year we have also seen a Family Café established on a weekly basis. Our Sunday evening youth provision ended at the end of 2023 and new ways for our young people to connect are being explored.

We also hold one off activities through the year, which this year have included a Fun Day as well as a number of community events held in the centre.

We also hold regular groups which connect with adults in the Church and across our community. Our Knit & Natter group meets weekly in the Church Centre and our Men's Football group plays weekly at the local sports centre. Thom's Blokes is a group for men that meets monthly for talks, outings and social gatherings and Thom's Golden Folks meets twice a month for talks and social gatherings or a meal. Thom's Golden Folks also held a successful 'holiday at home' in August.

A number of Church House Groups have also continued to meet through the year for bible study, prayer and support.

Mission and evangelism

Mission and evangelism are significant parts of our calling as a Church. We encourage every member of the Church to live in a way which demonstrates God's love for those they meet on a daily basis. Alongside this we hold a number of events throughout the year which focus on sharing the good news of Jesus, these include our Christmas and Easter services as well as one off events such as the Pancake Party held in February, the Light Trail held on 31 October and a Holiday Club held at Easter.

We continue to support local, national and international organisations who demonstrate the love of God to people either in word or action. The PCC continues to follow the biblical ethos of tithing with 10% of St Thomas' unrestricted donations being transferred into the World Mission Fund each year. The distribution of this fund is administered by the Mission Support Committee.

During 2023 there was a review of the Mission Partnerships we support and our main partnerships are now Tearfund, Open Doors, New Wine, Home For Good, Hope House and the Gates Arts Group.

The main beneficiaries, with donations of £1,000 or more, during 2023 were:

- Christian Solidarity Worldwide (CSW)
- Christian Mission Society (CMS)
- Tearfund
- Christian Vision for Men (CVM)
- Gates Art Group
- Hope House

Our parish magazine, Ploughshare, is published six times a year and is available on the Church website. Subscribers can also pay a small fee to receive a hard copy.

St Thomas' Church Centre

Our Centre continues to be a vital part of our mission and ministry with many of our church ministries using the building to hold activities on a weekly basis. The Centre is also used widely by a variety of community groups and organisations.

The Coffee Shop continues to remain a popular meeting place for those within the community, with many regulars who appreciate the warm welcome they receive. It is also well used by many of our Church members using the Coffee Bar as a place to connect with family and friends.

The Centre is managed by STB (Chesterfield) Ltd, a subsidiary company of the PCC, and is overseen by a Board of Directors who are Mark Hoare, Phil Bird, Alex Quinton, Ingrid Raby and Gary Weston with Beth Robson-Smith and Becky Botham also attending meetings. We thank them for all the hard work and dedication they put into the Centre and its running. We are also grateful to all the staff, volunteers and paid, who work hard to make the centre run smoothly.

Over the past 12 months the Centre Staff and volunteers have worked hard to hold a number of well received events such as the Festive Market, Community Day, and has provided a fantastic space for our church groups. Throughout the year we have been trailing Saturday opening to allow the centre to reach additional parts of the community. The Saturday openings have covered costs and have provided a fantastic service.

Alongside the main church, the centre has upgraded its televisions and has improved decoration in the coffee bar to increase our capabilities which have been used most recently in the Alpha course. In terms of the finances, the accountants are currently working on the year end accounts and will be updated during March 2024.

Pastoral care and community support

Some members of our parish are unable to attend church due to sickness or age. We have a pastoral team who either make contact with or visit those who we are aware need pastoral care. Throughout 2023 we have regularly visited both Chatsworth Lodge and Brookholme Care Home.

We also continued to support Chesterfield Foodbank and St Thomas' Baby Basics Fund, which is part of the Baby Basics UK initiative, a project that supports vulnerable new mothers by providing a free Moses basket starter pack and other essential items to mothers / families who are struggling to meet the financial and practical burden of looking after a new baby. This fund works on a referral basis from local health and social care professionals.

Our thanks go to Charlotte Baldwin and Jane Simmonds for all the work they have put into Baby Basics over the year.

Volunteers

We would like to thank all the volunteers who work so hard in our Church and Centre from those that take on practical tasks from maintenance, washing up or cleaning as well as those who serve on the many teams that enable our worship on a Sunday, our under 18's ministry or the many groups that meet on a regular basis. Church works best

when each of us contribute to its life and ministry and we are hugely grateful to everyone who gives up their valuable time to be involved.

Deanery Synod

Two Deanery Synod representatives sit on the PCC. This provides the PCC with an important link between the parish and the wider structures of the Church and the Diocese. The Reverend Daniel Cooke continues to serve as our Area Dean and has conducted a visit to St Thomas' during 2023 on behalf of the Archdeacon.

Financial Review

The financial statements show that total expenditure exceeded income by £8,225 in 2023 (2022 £25,475 surplus). Where possible, expenditure was made from designated and restricted funds to maintain our unrestricted reserves.

£177,113 was spent from unrestricted funds during 2023 (2022 £172,881) to provide the ministry of the parish. The two most significant categories of expenditure are our contribution to the Derby Diocesan Common Fund, which largely provides the stipends and housing for the clergy, and staff costs. As for households in our community, our energy costs continue to be a concern.

STB (Chesterfield) Ltd has continued to run the Centre and associated Coffee Bar. During the year it has followed the principal, as far as possible, of making a third of the space in the Centre available to St Thomas' Church, and two thirds available for Community and Commercial lettings. The year end accounts are due by the end of April 2023 and all indications are that there will be a small profit in year surplus which they will retain in order to build up sufficient funds to cover the cost of replacement equipment.

STB (Hope House) Ltd was dissolved on 25 April 2023. The running of Hope House is now undertaken through a separate company, Hope House (Chesterfield) Ltd, which is also a registered charity (charity number 1183254). The company is not connected to the PCC.

Reserves Policy

It is PCC policy to try to maintain a balance of free reserves to cover at least three months' planned expenditure. It is held to smooth out fluctuations in cash flows and to help cover emergencies. The PCC defines free reserves as unrestricted net current assets excluding any amounts owed by subsidiary companies since this money is not considered to be readily available.

Based on the approved 2024 expenditure budget, the amount required to meet the reserves policy is £47,549. The balance of the free reserves at 31 December 2023 stands

at £25,743 (2022 £64,898). This is significantly below the PCC's target level and the PCC are currently considering ways to address the shortfall.

In addition, at 31 December 2023, a total cash balance of £69,580 was held in designated and restricted funds to meet the costs of development, repairs and maintenance of St Thomas' (£30,000 designated and £18,765 restricted) and the Centre (£20,815). Capital expenditure of nearly £23,000 was incurred from the St Thomas' restricted fund during 2023 for the replacement of the audio-visual system.

Details of the balances and movements on these and the other restricted funds can be found in note 11 to the financial statements.

Structure Governance and Management

The PCC is a corporate body established by the Church of England and operates under the Parochial Church Council (Powers) Measure 1956. The PCC is a registered charity and all members of the PCC are charity trustees.

The method of appointment of PCC members is set out in the Church Representation Rules. PCC members can either be ex-officio through their role or elected. All members of our congregations who are on the electoral rolls of the churches are able to vote and stand for election to the PCC.

The PCC members are responsible for making decisions on all matters of general concern and importance to the parish including deciding on how the funds of the PCC are to be spent. New members receive a booklet into the workings of the PCC. There are a number of committees in church, each dealing with a particular aspect of parish life, and all are responsible to the PCC.

The PCC met 6 times during the year for scheduled meetings with an average attendance of 73%.

Along with their regular review of finances, policies and the order of the buildings and grounds, the PCC focused specifically on its own purpose and how it serves the wider Church as well as on the purpose and vision for the church, worship and services post-pandemic, mission and outreach, and the impact of the potential pastoral reorganisation to include the Parish of Brampton, St Mark.

Administrative Information

Full name of the PCC

The Parochial Church Council of the Ecclesiastical Parish of St Thomas, Brampton,
Chesterfield

Principal and correspondence address

St Thomas' Church
Church Office
Chatsworth Road
Brampton
Chesterfield
S40 3AW

Charity registration number

1138026

General contact

Mrs Becky Botham Parish Operations Manager

Independent examiner

Howard Freeman BSc (Hons) FCA CTA
Shorts
2 Ashgate Road
Chesterfield
S40 4AA

Membership of the PCC *(see note 1 below)*

Clerks in Holy Orders (beneficed or licensed to the Parish) *(see note 2 below)*

Reverend Gary Weston	Ex-officio
Reverend Josie Chamings	Ex-officio (from 2 July 2023)

Churchwardens *(members of the PCC by virtue of rules M15(1)(e) and M15(1)(g))* *(Parish Wardens elected annually, see note 3 below)*

Millie Guthrie	Parish Warden
Tony Witham	Parish Warden

Readers licensed to the Parish (ex-officio until the APCM on 17 May 2023)

Martin Cox	Ex-officio
Tim Wheeler	Ex-officio

Elected Deanery Synod Members

Millie Guthrie	2020–2023 (to 17 May 2023)
Stuart Robinson	2020–2023 (to 17 May 2023)
Ben Widdowson	2020–2023 (to 17 May 2023)
Jenny Smedley	2020–2024 (as Diocesan Synod representative)
Karen Riley	2023–2026 (elected 17 May 2023)

Ordinary Elected Members

(a maximum of fourteen members by virtue of rule M15(8)(c))

Lindsay Leteve	2020–2023 (to 17 May 2023)
Diane Boothby	2021–2024
Robin Dawson	2021–2024
Phil Bird	2022–2024
Mark Hoare	2022–2025
Carla Jackson	2022–2025
Ingrid Raby	2022–2025
Martin Cox	2023–2024 (elected 17 May 2023)
Elizabeth Travis	2023–2025 (elected 17 May 2023)
Paul Benson	2023–2026 (elected 17 May 2023)
Ben Widdowson	2023–2026 (elected 17 May 2023)
Sue Ward	2023–2026 (elected 17 May 2023)
Claire Wood	2023–2026 (elected 17 May 2023)

Co-opted in her capacity as Parish Operations Manager & Safeguarding Officer

Becky Botham (non-voting)

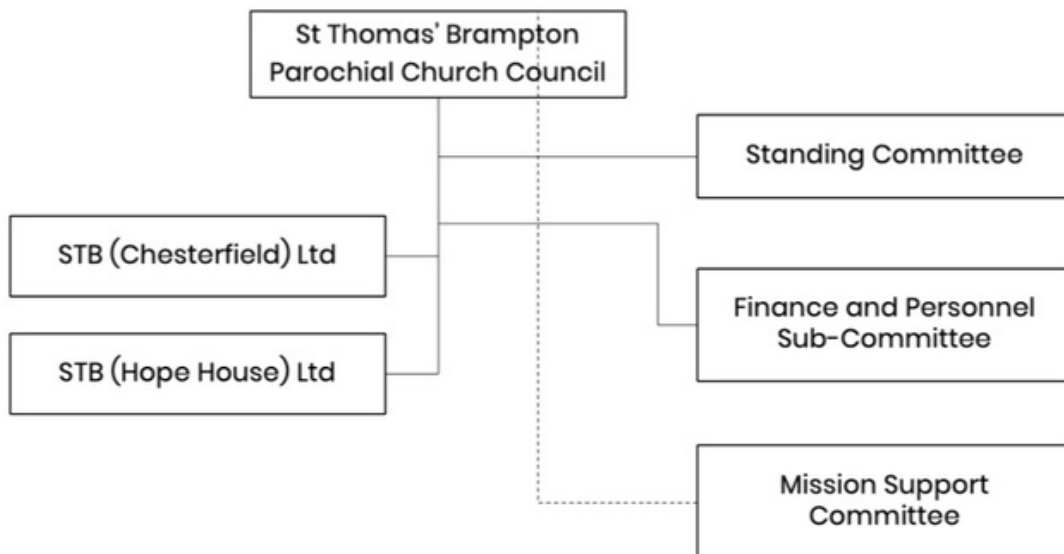
PCC Secretary

Sue Wheeler (non-voting)

Notes:

1. All membership rules are in accordance with the Church Representation Rules 2020.
2. Churchwardens measure 2001 – provision 3, “Disqualification after six periods of office”. A meeting of parishioners (2009) resolved that this section shall not apply in this parish. This resolution may be revoked by a subsequent meeting of the parishioners.

Organisation Structure



Committees

Standing Committee

Chair: Reverend Gary Weston

Members: Millie Guthrie, Tony Witham, Ben Widdowson, Karen Riley and Claire Wood and Sue Wheeler (PCC Secretary – to take minutes).

The committee is empowered to transact the business of the PCC between PCC meetings subject to any directions given by the PCC.

Finance and Personnel sub-committee

Chair: Reverend Gary Weston

Members: *Ben Widdowson, Paul Willis, Tony Witham, Sue Ward, Mark Hoare and Sue Wheeler (PCC Secretary – to take minutes).*

To manage the parish accounts and to advise the PCC on all matters relating to the financial activities of the churches. To advise the PCC on all matters relating to employment issues, including, but not limited to, recruitment, development, terms & conditions and discipline.

Mission Support Committee

Chair: Reverend Gary Weston

Members: Charlotte Baldwin (from April 2023), Robin Dawson, Betty Frost (until October 2023), Anne Hewitt, Ann Small, John Small, Angela Wright.

To encourage, support, promote and manage St Thomas' support of the church's world mission partners and to seek ways to help St Thomas' engage in world and home mission.

Directors of subsidiary companies

STB (Chesterfield) Ltd (Company Number 08146516)

Phil Bird

Mark Hoare

Alex Quinton

Ingrid Raby

Reverend Gary Weston

STB (Hope House) Ltd (Company Number 09194559)

Directors to 25 April 2023 when the company was dissolved:

Reverend Canon Matt Barnes

Mark Hoare

Karen Riley

Andrew Travis

The Trustees' Annual Report was approved by the Parochial Church Council at its meeting on [date] 2024 and signed on its behalf by Reverend Gary Weston.

Independent Examiner's Report

To the members of the PCC of St Thomas' Brampton

I report on the accounts of the PCC for the year ended 31 December 2023, which are set out on pages 13 to 26, in respect of an examination carried out in accordance with the Church Accounting Regulations 2006 (The Regulations) and section 145 of The Charities Act 2011.

Respective responsibilities of Members and examiners

As members of the PCC, you are responsible for the preparation of the financial statements. You consider that an audit is not required for this year under section 144 of the Charities Act 2011 (Charities Act) and that an independent examination is needed.

It is my responsibility to you:

- to examine the accounts under section 145 of the Charities Act
- to follow the procedures laid down in the General Directions given by the Charity Commission (under section 134 (5) (b) of the Charities Act), and
- to state whether particular matters have come to my attention.

Basis of Independent Examiner's Report

My examination was carried out in accordance with the General Directions given by the Charity Commissioners under Section 43 (7) (b) of the Act and to be found in the Church Guidance, 2006 edition. That examination includes a review of the accounting records kept by the PCC and a comparison of the accounts with those records. It also includes considering any unusual items or disclosures in the financial statement and seeking explanations from you as trustees concerning any such matters. The procedures undertaken do not provide all the evidence that would be required in an audit, and consequently I do not express an opinion on the view given by the accounts.

Independent Examiner's Statement

In connection with my examination, no matter has come to my attention:

1. which gives me reasonable cause to believe that in any material respect the requirements
 - to keep accounting records in accordance with Section 41 of the Act; and
 - to prepare financial statements which accord with the accounting records; and
 - comply with the requirements of the Act and the Regulationshave not been met
or
2. to which, in my opinion, attention should be drawn in order to enable a proper understanding of the accounts to be reached.

Howard Freeman BSc (Hons) FCA CTA

4 March 2024

ST THOMAS' BRAMPTON

STATEMENT OF FINANCIAL ACTIVITIES FOR THE YEAR ENDED 31 DECEMBER 2023

	Note	Unrestricted Funds £	Designated funds £	Restricted Funds £	Total 2023 £	Total 2022 £
INCOME						
Voluntary income	2a	162,002	-	18,120	180,122	195,677
Activities for generating funds	2b	1,320	90	475	1,885	10,837
Income from church activities	2c	17,959	-	144	18,103	19,371
TOTAL INCOME		181,281	90	18,739	200,110	225,885
EXPENDITURE						
Missionary & charitable giving	3a	1,092	16,673	-	17,765	15,370
Church activities	3b	176,021	-	14,549	190,570	184,795
Raising funds	3c	-	-	-	-	245
TOTAL EXPENDITURE		177,113	16,673	14,549	208,335	200,410
Net Income / (Expenditure)		4,168	(16,583)	4,190	(8,225)	25,475
Write off of investment in STB (Hope House)	7a	(1)	-	-	(1)	-
Transfer of House for Duty to St John's Walton		-	-	-	-	(248,000)
Removal of St Peter's net assets at 1 October 2022		-	-	-	-	(19,136)
Transfer between funds	6	(43,325)	43,030	295	-	-
Net movement in funds		(39,158)	26,447	4,485	(8,226)	(241,661)

Total funds brought forward	11	64,901	21,944	70,459	157,304	398,965
Total funds carried forward		25,743	48,391	74,944	149,078	157,304

ST THOMAS' BRAMPTON

BALANCE SHEET AS AT 31 DECEMBER 2023

	Note	2023 £	2022 £
Fixed Assets:			
Intangible fixed assets	7a	1	2
Tangible fixed assets	7b	19,044	-
Total fixed assets		19,045	2
Current Assets:			
Debtors	8	4,848	4,153
Short term deposits		10,188	10,188
Cash at bank and in hand		124,377	152,632
Total current assets		139,413	166,973
Current Liabilities:			
Amounts falling due within one year	9	(9,380)	(9,671)
Net Current Assets		130,033	157,302
Total Assets less Current Liabilities		149,078	157,304
Amounts falling due after one year		-	-
Net Assets		149,078	157,304
Funds:			
Unrestricted	11	25,743	64,901

Designated	11	48,391	21,944
Restricted	11	74,944	70,459
Total		149,078	157,304

Approved by the Parochial Church Council on [date] 2024 and signed on its behalf by Reverend Gary Weston.

The notes on pages [xx] to [xx] form part of these financial statements.

ST THOMAS' BRAMPTON

Notes to the financial statements for the year ended 31 December 2023

1: Accounting Policies

The PCC is a public benefit entity within the meaning of Financial Reporting Standard 102. The financial statements have been prepared under the Charities Act 2011 and in accordance with the Church Accounting Regulations 2006 governing the individual accounts of PCCs, and with the Regulations' "true and fair" provisions, together with applicable accounting standards and the Statement of Recommended Practice, Accounting and Reporting by Charities (SORP(FRS102)).

The financial statements have been prepared under the historical cost convention and on a going concern basis as, in the view of the PCC members, the PCC will be able to meet its debts as they fall due over a period of at least 12 months from the date of the signing of these financial statements.

Basis of preparation

The aggregate gross income of the PCC and its wholly-owned subsidiary company, STB (Chesterfield) Ltd, is less than £1 million. The PCC has therefore taken advantage of the exception relating to the requirement to prepare group accounts provided in the Charities Act 2011 and SI 2008/629.

These financial statements include all transactions, assets and liabilities for which the PCC is responsible in law. They do not include the accounts of church groups that owe their main affiliation to another body or those that are informal gatherings of church members.

Assets

Consecrated and benefice property

In so far as consecrated and benefice property of any kind is excluded from the statutory definition of 'charity' by Section 10(2) (a) and (c) of the Charities Act 2011, such assets are not capitalised in these financial statements.

In simpler terms, these financial statements only include property that is owned by the PCC. Clergy housing is owned by Derby Diocese and is capitalised in their financial statements.

The freehold of the church buildings, the churchyards and St Thomas' church centre vests in the incumbent (who is the temporary custodian), rather than the PCC, so their

values are not included in these accounts. However, it is the responsibility of the PCC to maintain these properties and any expenditure on maintenance is written off as incurred.

Moveable church furnishings

Moveable church furnishings held by the incumbent (the holder of the Church of England parochial charge or benefice) and Churchwardens on special trust for the PCC, and which require a faculty for disposal, are accounted for as inalienable property unless consecrated. In this case, the items are not capitalised, but they are listed in the church's inventory which can be inspected at any reasonable time.

All expenditure incurred on these items at any time has been written off.

Tangible fixed assets for use by the charity

These items are capitalised if they can be used for more than one year, and cost at least £1,000. They are valued at cost or else, for gifts in kind, at a reasonable estimate of their open market value on receipt.

Depreciation is calculated to write off the capitalised cost of other fixed assets, less their currently anticipated residual fair value, over their estimated useful lives as follows:

- Fixtures and fittings 20 years
- Computers / technology 3 years

Depreciation on fixed assets of £3,809 has been charged in these financial statements (2022 £nil).

Investments

The shares held by the PCC in its wholly-owned subsidiary companies are shown at their nominal value.

Short term deposits

These are cash deposits held at the Chesterfield and North Derbyshire Credit Union.

Funds

Unrestricted funds

These represent the funds of the PCC that are not subject to any restrictions regarding their use and are available for application on the general purposes of the PCC. Funds designated for a particular purpose by the PCC are also unrestricted.

Restricted funds

These are income funds that must be spent on restricted purposes and details of the funds held are shown in the notes to the accounts.

Income

Voluntary donations

Gift Aid donations, other planned giving, gifts on plate and sundry donations are recognised when received by or on behalf of the PCC.

Income tax recoverable on Gift Aid donations is recognised when the income is received. Legacies to the PCC are accounted for as soon as the PCC is notified of its legal entitlement, the amount is quantifiable and its ultimate receipt by the PCC is reasonably certain.

Other Income

Income from the sales of books and magazines is accounted for gross, before any related costs have been deducted. Income from the letting of the church premises is recognised when due. Parochial fees due to the PCC for weddings, funerals etc. are accounted for on an event-by-event basis. Income from fundraising events and other church activities is recognised when received.

Expenditure

Grants for Mission

Grants and donations for mission are accounted for when paid over, or when awarded, if that award creates a binding obligation on the PCC.

All other expenditure is accounted for when due.

Staff Pension Arrangements

All eligible PCC employees are enrolled in the NEST Pension Scheme, a defined contribution pension scheme set up by the government.

2a: Voluntary income

	Unrestricted Funds £	Designated funds £	Restricted Funds £	Total Funds 2023 £	Total Funds 2022 £
Planned giving	130,154	-	12,900	143,054	152,875
Sundry donations	32	-	16	48	1,071
Open plate donations	2,638	-	145	2,783	3,946
Tax recoverable	29,178	-	229	29,407	33,818
Grant	-	-	4,830	4,830	3,467
Legacies	-	-	-	-	500
TOTAL	162,002	-	18,120	180,122	195,677

Restricted grant income of £4,830 was received during the year, being £3,000 for the work of Baby Basics, £1,030 for the incremental cost of providing Warm Spaces and £800 for a replacement piano (2022 an energy grant of £1,167 was received plus restricted grant income of £2,300, being £1,000 for the work of Baby Basics, £500 to help the parish celebrate the late Queen's Platinum Jubilee and £800 towards maintaining the churchyard at St Peter's).

2b: Activities for generating funds

	Unrestricted Funds £	Designated funds £	Restricted Funds £	Total Funds 2023 £	Total Funds 2022 £
Fund raising events	-	90	475	565	153
Letting of rooms	1,320	-	-	1,320	1,376
Rent – temporary let of house for duty	-	-	-	-	9,308
TOTAL	1,320	90	475	1,885	10,837

2c: Income from church activities

	Unrestricted Funds £	Designated funds £	Restricted Funds £	Total Funds 2023 £	Total Funds 2022 £
Fees for weddings / funerals	3,422	-	-	3,422	6,161
Book and magazine sales	143	-	144	287	343
Income from other church group activities	14,394	-	-	14,394	12,867
TOTAL	17,959	-	144	18,103	19,371

3a: Missionary and charitable giving

	Unrestricted Funds £	Designated funds £	Restricted Funds £	Total Funds 2023 £	Total Funds 2022 £
Overseas missionary societies:					
- CSW	-	1,525	-	1,525	2,515
- CMS	-	1,645	-	1,645	2,640
- Other overseas missionary societies	60	850	-	910	335
Overseas relief / development agencies:					
- Tearfund	-	3,478	-	3,478	2,515
Other overseas giving	-	500	-	500	650
Home missions and others:					
- Church on the Bus	200	500	-	700	1,050
- CVM	-	2,375	-	2,375	2,540

- Gates Arts Group	-	1,100	-	1,100	1,000
- Hope House	-	1,500		1,500	800
- Other home giving	832	3,200	-	4,032	1,325
TOTAL	1,092	16,673	-	17,765	15,370

3b: Expenditure on church activities

	Unrestricted Funds £	Designated funds £	Restricted Funds £	Total Funds 2023 £	Total Funds 2022 £
Common Fund	65,475	-	-	65,475	74,864
Ministry expenses	4,215	-	-	4,215	2,108
Children / Youth work	28,528	-	4,259	32,787	27,152
Cost of running other church group activities	13,748	-	793	14,541	10,486
Parish training & mission	250	-	2,920	3,170	5,728
Church running expenses	22,931	-	-	22,931	17,092
Church maintenance	2,184	-	-	2,184	1,075
Upkeep of services	3,978	-	5,244	9,222	4,045
Upkeep of churchyard	4,892	-	-	4,892	4,951
Church administration	29,327	-	-	29,327	30,250
Parish magazine / books	403	-	-	403	335
Upkeep of church centre	90	-	1,333	1,423	6,283
Upkeep of House for Duty	-	-	-	-	426
TOTAL	176,021	-	14,549	190,570	184,795

Included in the costs of church administration is the fee of £1,320 (2022 £1,260) payable to the PCC's Independent Examiner for the examination of the financial statements.

3c: Expenditure on raising funds

	Unrestricted Funds £	Designated funds £	Restricted Funds £	Total Funds 2023 £	Total Funds 2022 £
Cost of appeals	-	-	-	-	-
Fundraising costs	-	-	-	-	245
TOTAL	-	-	-	-	245

4: Staff costs

The PCC employs a number of people to support the ministry and administration of the parish. Details of the costs of these employees is shown below. The PCC also pays for the services of a church cleaner and a gardener.

The PCC does not pay the salaries of the clergy directly but pays towards these costs through the contribution to the Common Fund.

	2023 £	2022 £
Wages and salaries	52,111	46,058
Pension costs	1,775	1,548
TOTAL	53,886	47,606

	Number	Number
Average number of employees	3	3

During the year the PCC employed individuals in the following roles, with all employment contracts being part-time with the exception of the 0-18 Director:

- Parish Operations Manager
- Parish Administration Assistant
- 0-18 Director

No employee was paid in excess of £60,000 in either year.

Relief from £3,613 of employer's national insurance contributions was provided under the HMRC Employment Allowance Scheme (2022 £2,898).

5: Related party transactions

Mrs Julie Sparks was a member of the PCC and was paid £7,368 for her role as Parish Assistant in 2022. She was no longer a member of the PCC in 2023.

Brams Landscapes, a business owned by the husband of Mrs Jenny Smedley who is a member of the PCC, was paid £2,900 for the maintenance of the churchyard at St Thomas' (2022 £2,400).

Mick Boothby, the husband of Mrs Diane Boothby who is a member of the PCC, was paid £20 (2022 £nil) for work performed on the church building.

No payments or expenses were paid to any other PCC member, persons closely connected or related parties.

6: Analysis of transfer between funds

In line with the biblical ethos of tithing, the PCC has maintained its tradition of transferring 10% of the amount received by St Thomas' from unrestricted giving to the Mission Support designated fund for missionary and charitable giving during the following year. Having considered its reserves position at 31 December 2023, the PCC has not transferred the associated Gift Aid on the tithe for 2023.

The Maintenance Fund was created by the PCC in 2023 to hold money set aside to cover the costs of undertaking required repairs and maintenance to the church premises, including items identified in the 2023 Quinquennial Report. £30,000 was transferred into this fund in June 2023.

During the year, the Mission Support Committee has donated £250 from its designated fund to the work of Baby Basics. This donation is held in the Baby Basics restricted fund until used.

When weddings are held in St Thomas' and the couple being married wish to have the organ played at the service, they pay the organist's fee plus an additional amount of £45 to the PCC which goes towards the upkeep of the organ. This amount is held in the Organ restricted fund. During 2023, one wedding was held where the organ was played.

	Unrestricted Funds £	Designated funds £	Restricted Funds £	Total £
Missionary and charitable giving	(13,280)	13,280	-	-
Maintenance of church buildings	(30,000)	30,000	-	-
Donation to Baby Basics	-	(250)	250	-
Organ Fund contribution	(45)	-	45	-
TOTAL	(43,325)	43,030	295	-

7a: Intangible fixed assets - investments

	2023 £	2022 £
STB (Chesterfield) Ltd – one ordinary share	1	1
STB (Hope House) Ltd – one ordinary share	-	1
TOTAL	1	2

STB (Chesterfield) Ltd is the company that runs the St Thomas' coffee shop and manages room bookings on behalf of the PCC.

STB (Hope House) Ltd is the company that was set up to support the provision of safe and fair living accommodation for the homeless with an offer of additional services to clients trying to re-engage with normal society. The company was dissolved on 25 April 2023. The nominal value of the share has been written off.

7b: Tangible fixed assets – church equipment

	Sound technology £
Cost	
At 1 January 2023	-
Additions at cost	22,853
At 31 December 2023	22,853
Depreciation	
At 1 January 2023	-
Charge for the year	3,809
At 31 December 2023	3,809
Net book value	
At 31 December 2023	19,044
At 31 December 2022	-

A new sound / visual system was purchased for the church in July 2023. The cost of this fixed asset will be depreciated over 3 years.

8: Debtors

	2023 £	2022 £
Income tax recoverable	582	854
Other debtors	-	111
Prepayments	4,266	3,188
TOTAL	4,848	4,153

9: Liabilities falling due within one year

	2023 £	2022 £
Accruals	8,202	9,190
Creditors for goods and services	1,178	481
TOTAL	9,380	9,671

10: Analysis of net assets by fund

	Unrestricted Funds £	Designated funds £	Restricted Funds £	Total Funds 2023 £	Total Funds 2022 £
Fixed assets	1	-	19,044	19,045	2
Current assets	35,010	48,391	56,012	139,413	166,973
Current liabilities	(9,268)	-	(112)	(9,380)	(9,671)
Long term liabilities	-	-	-	-	-
TOTAL	25,743	48,391	74,944	149,078	157,304

11: Fund details

Unrestricted funds

These comprise the general funds of the church and include the nominal value of its investments in subsidiary companies.

Designated funds

These are funds set aside from the general funds by the PCC for a specific purpose. During 2023 there were two funds designated by the PCC.

The Mission Support Fund, previously known as the World Mission Fund, is used to hold and administer the 10% of St Thomas' unrestricted income from donors set aside by the PCC for its own missionary and charitable donations.

The Maintenance Fund was created by the PCC in 2023 to hold money set aside to cover the costs of undertaking required repairs and maintenance to the church premises, including items identified in the 2023 Quinquennial Report.

	Balance 1 January £	Incoming resources¹ £	Resources used £	Balance 31 December £
St Thomas' Mission Support Fund	21,944	13,370	16,923 ²	18,391
St Thomas' Maintenance Fund	-	30,000	-	30,000
	21,944	43,370	16,923	48,391

1. For amounts transferred from unrestricted funds, see note 6.

2. Includes £250 transferred to Baby Basics Fund. See note 6 for details.

Restricted funds

These hold monies given, collected or donated for a specific purpose and the value of any fixed assets purchased with those monies.

	Balance 1 January £	Incoming resources £	Resources used £	Balance 31 December £
St Thomas' Restricted Funds				
Church Centre Fund	10,826	11,211	1,333	20,704
Development Fund	41,623	600	4,414	37,809
Children's Work Fund	4,259	20	4,259	20
Organ Fund	1,025	45 ¹	-	1,070
Sound Fund	-	1,679	829	850
Community Fund	928	144	299	773
Intern Fund	11,131	-	-	11,131
Baby Basics Fund	655	4,305 ²	2,610	2,350
Missional Activity Fund	-	1,030	793	237
More Than A Day Fund	12	-	12 ³	-
Total	70,459	19,034	14,549	74,944

1. Amount transferred from unrestricted fund. See note 6 for details.

2. Amount includes £250 transferred from the Mission Support Fund. See note 6 for details.

3. Amount repaid to Derbyshire Voluntary Action in February 2023.